

FOLLOW THE LEADER!

*Still The Best
Custom 1911 Pistols
On The Planet.*



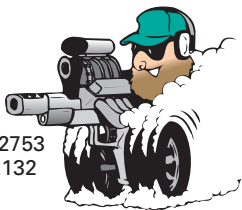
LES BAER CUSTOM

www.lesbaer.com

LES BAER CUSTOM, INC.

1804 Iowa Drive • LeClaire, Iowa 52753
Ph: (563)289-2126 • Fx: (563)289-2132

Email: info@lesbaer.com
<http://www.lesbaer.com>



Office Hours: 8AM-5PM Central Time

Dear Customer:

In so many ways, 2020 and 2021 have been a trial for all of us. Challenges to our health and welfare, our freedoms, our way of life, and the way we do business. None of us has escaped unscathed. All the more reason to move into the future with partners who have continued to demonstrate their devotion to time-honored business practices like customer loyalty, innovation, unmatched skill sets, and product performance that continues to set standards of excellence year in and year out.

For more than a quarter century, Les Baer Custom has been providing discriminating shooters with the finest custom 1911 handguns available anywhere on the planet. Of course, it's easy to make that claim, but we are quite confident that we can back it up. By combining state-of-the-art, precision engineered custom parts with old world craftsmanship and unmatched attention to detail, we produce masterpieces of the gun maker's art. Every single pistol that leaves our shop is a reflection of our commitment to provide each new owner with a heritage-quality firearm that will shoot reliably and accurately every single time, without fail. Proof of that commitment to unequaled performance is the respect Les Baer pistols have earned among law enforcement officers, military special forces teams, professional competitors, and knowledgeable civilians who understand the importance of reliable firearms performance.

In 2022, Les Baer Custom continues to lead the way in the design and development of the finest 1911 style handguns in the world, breathtaking in both their appearance and performance:

- The tried and true **Les Baer Custom Premier II®** pistol is still the king of 1911 pistols. And, with all its' variations, it's still not only the flagship of our 1911 line, it also continues to be the worldwide standard of excellence against which all 1911 pistols are judged. See pages 2 through 6 of this catalog for a look at all the Premier II® models available from Les Baer Custom.
- Although traditional **.45 ACP** is still the most popular chambering for 1911 pistols, our decision to broaden our offering of several optional calibers in some of our high demand models has been extremely well received. Check all the models in this catalog to review those available in optional 9mm, .38 Super, and 10mm.
- Our preeminence as superior custom 1911 builders has also led to the development of several special edition pistols in cooperation with such illustrious entities as *American Handgunner Magazine*, *Gunsite Academy*, *Shooting USA*, and the *Kenai Special*, a tribute to the State of Alaska.

Enjoy our 2022 catalog and our innovative products. Good shooting!

Thank you for your business,

Les Baer Sr.

Member American Handgunner 100 Club

VERSATILE 1911_s FOR DUTY, DEFENSE AND COMPETITION



**LES BAER
CUSTOM, INC.**

*Performance.
It's everything.*





**BAER 1911
PREMIER II®
5" MODEL**

**.45 ACP NOW
AVAILABLE IN
CALIFORNIA**

America's Leading Custom 1911

Les Baer's Premier II® has become the industry standard to which all other factory or custom built 1911s are compared. The 5" long Government Model (pictured above) is the best single stack duty, defense or competition pistol you'll find in America -- the best quality, the best value and the best performance. No wonder so many of them show up at IPSC Limited Class matches. The Premier II® is even guaranteed to shoot 3" groups at 50 yards! We've sold so many in the USA and abroad, the Premier II® has become the flagship of our line. It performs like a million bucks but it costs a whole lot less.

Features include:

Baer NM steel frame, NM slide and NM barrel with stainless bushing • Slide fitted to frame • Double serrated slide • Low mount LCB adjustable sight with hidden rear leaf • Baer dovetail front sight • Lowered and flared ejection port • Tuned and polished extractor • Baer extended ejector • Baer checkered slide stop • Baer speed trigger with crisp 4 lb pull • Baer deluxe Commander hammer and sear • Baer beavertail grip safety with pad • Flat serrated mainspring housing • Beveled mag well • Polished feed ramp and throated barrel • Baer extended ambi safety • High checkered front strap @ 30 lpi • Pistol tuned for total reliability • Baer Premium Checkered grips • Blued finish • (2) 8-round premium magazines

Caliber: .45 ACP, .38 Super w/supported chamber, 9mm w/supported chamber, 40 S&W w/supported chamber

Ask about our special 1½" guarantee.



BAER 1911 PREMIER II® 6" MODEL

What do you get when you add an extra inch of slide length to a Baer 1911 Premier II®? Dramatically higher velocity and the same spectacular performance. Add to that a well deserved reputation for superior quality, dependability and value, and the result is a guaranteed winner. Our 6" Premier II® includes all the features of our original 5" Premier II® including:

Baer NM steel frame, NM slide and NM barrel with stainless bushing • Baer 6" slide fitted to frame • Double serrated slide • Low mount LBC adjustable sight with hidden rear leaf • Baer dovetail front sight • Lowered and flared ejection port • Tuned and polished extractor • Baer extended ejector • Baer checkered slide stop • Baer speed trigger with crisp 4 lb pull • Baer deluxe Commander hammer and sear • Baer beavertail grip safety with pad • Flat serrated mainspring housing • Beveled mag well • Polished feed ramp and throated barrel • Baer extended ambi safety • High checkered front strap @ 30 lpi • Pistol tuned for total reliability • Baer Premium Checkered grips • Blued finish • (2) 8-round premium magazines

*Caliber: .45 ACP, .38 Super w/supported chamber, 9mm w/supported chamber
Ask about our 1 1/2" guarantee!*



**.45 ACP NOW
AVAILABLE IN
CALIFORNIA**

BAER 1911 PREMIER II® SUPER-TAC Comes with Night Sights!

Here's another interesting wrinkle on America's favorite 1911. We've added a special tactical package including special sights and a special finish to the Premier II® to make it an ideal duty/tactical sidearm. Features include:

Baer NM steel frame, NM slide and NM barrel with stainless bushing • Slide fitted to frame • Double serrated slide • Low mount LBC adjustable rear sight and Baer dovetail front sight both fitted with tritium night sights • Lowered and flared ejection port • Tuned and polished extractor • Baer extended ejector • Baer checkered slide stop • Baer speed trigger with crisp 4 lb pull • Baer deluxe Commander hammer and sear • Baer beavertail grip safety with pad • Flat serrated mainspring housing • Beveled mag well • Polished feed ramp and throated barrel • Baer tactical style ambi safety • High checkered front strap @ 30 lpi • Pistol tuned for total reliability • Baer Premium Checkered grips • Deburred for tactical carry • Dupont S coating on complete pistol for maximum corrosion resistance • (2) 8-round premium magazines

Calibers: .45 ACP, .38 Super w/supported chamber, 9mm w/supported chamber

Ask about our special 1 1/2" guarantee.



BAER 1911 PREMIER II[®] 6" 10mm HUNTER

More hunters than ever are responding to the challenge of stalking big game using only a handgun. But, for many, the experience could be even more satisfying if they were able to go afield equipped with a familiar feeling 1911, built for match grade accuracy and superior reliability, while being specially chambered in a powerful, high velocity caliber with plenty of knockdown power. Les Baer understands.

Les Baer Custom's newest model of the world famous Premier II[®] has been designed and built specifically as a precision hunting arm and is a perfect choice for wild boar and most deer size game. While custom built from the ground-up and fully equipped for eye-popping and user friendly performance in the field or at the range, it is chambered for the hard hitting 10mm cartridge to ensure optimum accuracy and impact. Guaranteed to shoot 3" groups at 50 yards. Features include:

- Baer NM steel frame, NM slide and NM barrel with stainless bushing • Baer 6" slide fitted to frame
- Double serrated slide - Baer supported chamber 6" stainless steel barrel • Low mount LBC adjustable sight with hidden rear leaf • Baer fiber optic front sight (green standard, red optional) • Lowered and flared ejection port • Tuned and polished extractor • Baer extended ejector • Baer checkered slide stop • Baer speed trigger with crisp 4 lb. pull • Baer deluxe Commander hammer and sear • Beavertail grip safety with pad • Flat serrated mainspring housing • Beveled mag well • Polished feed ramp and throated barrel • Baer extended safety • High checkered front strap @ 30 lpi • Pistol tuned for total reliability • Baer Black Recon grips • Blued finish • (2) 9-round 10mm mags

*Caliber: 10mm w/supported chamber
Ask about our special 1½" guarantee.*



BAER 1911 PREMIER II[®] 10MM, 5"

As we know, 10mm is a dynamo of a caliber for boar and other deer sized game. But, several of our customers asked for something with the same hard hitting power and accuracy as our 6" 10mm Hunter but maybe a little shorter than the 6" model so in addition to being ideal for hunting, it's also perfectly suitable for licensed carry. Or even duty use. Kind of a multi-tasker.

And that's how our 5" 1911 10mm Premier II[®] was born. Standard 1911 size with big power and super performance.

Like the 6" model, the 5" is custom built from the ground-up and is fully equipped for unerring accuracy, superior handling characteristics, and dependability. And the 10mm cartridge is probably one of the hardest hitting and most reliable cartridges you'll find for semi-autos. Features include:

- Baer NM steel frame, NM slide and NM barrel with stainless bushing • Baer 5" slide fitted to frame
- Double serrated slide • Baer supported chamber 5" supported stainless steel barrel • Low mount LBC adjustable sight with hidden leaf • Baer fiber optic front sight (green standard, red optional) • Lowered and flared ejection port • tuned and polished extractor • Baer extended ejector • Baer checkered slide stop • Baer speed trigger with crisp 4 lb. pull • Baer deluxe Commander hammer and sear • Beavertail grip safety with pad • Flat serrated mainspring housing • Beveled mag well • Polished feed ramp and throated barrel • Baer extended safety • High checkered front strap @ 30 lpi • Pistol tuned for total reliability • Baer Black Recon grips • Blued finish -(2) 9-round mags

*Caliber: 10mm w/supported chamber
Ask about our 1 1/2" guarantee!*



BAER 1911 PREMIER II® HEAVYWEIGHT WITH MONOLITH HEAVYWEIGHT FRAME, 5"

If you place a very high priority on unerring accuracy, performance and total reliability... and if you value uniqueness...our new Premier II® Heavyweight just might be your next 1911. While including all the time proven features of our popular Premier II®, and sporting both a handsome and protective chrome finish and distinctive Les Baer logo grips, it's also built on Les Baer's exclusive Monolith Heavyweight frame. The heavyweight version of that unique frame adds a full 2.8 oz. of weight to the pistol, which helps reduce muzzle flip and felt recoil while providing superb balance. It's a serious heavy duty performer that comes with Les Baer's 3" guarantee at 50 yards. Features include:

- Baer NM steel Monolith Heavyweight frame • Baer double serrated slide • Slide fitted to frame • Baer NM barrel and stainless bushing • Low mount LBC adjustable sight with hidden rear leaf • Baer dovetail front sight • Lowered and flared ejection port • Tuned and polished extractor • Baer extended ejector • Baer checkered slide stop
- Baer speed trigger with crisp 4 lb. pull • Baer deluxe Commander hammer and sear • Baer checkered beavertail grip safety and pad • Flat serrated mainspring housing • Beveled mag well • Polished feed ramp and throated barrel • Baer extended ambi safety • High checkered front strap @ 30 lpi • Pistol tuned for total reliability • Exclusive Baer Racer logo grips • Chrome finish • (2) 8-round premium magazines

Caliber: .45 ACP

Ask about our special 1 1/2" guarantee



Flat underside of Monolith frame



Introducing:
AMERICAN HANDGUNNER
SPECIAL EDITION 1911
The All-American Handgun
For All American Handgunners

It stands to reason that the most perfect pistol yet created for the American shooter would be the end result of a cooperative effort between Les Baer Custom, America's premier custom pistolsmith, and American Handgunner magazine, the leading publication dedicated to excellence in handgun design and performance. The new AMERICAN HANDGUNNER SPECIAL EDITION 1911 starts with America's most iconic handgun, chambered in popular .45 ACP. Then it's custom built by Les Baer Custom with the care and precision that has made Les Baer 1911s the world's finest custom pistols...and with the thoughtful extra touches preferred by American Handgunner's readers. Special features include:

- Baer N.M. steel frame • Baer N.M. 5" Government length slide with rear cocking serrations • Baer 5" Government length barrel and custom fitted stainless steel bushing • Baer low mount adjustable Rolo rear sight with tritium night sights
- Baer dovetail front sight with tritium night sight • Slide hand fitted to frame • Lowered and flared ejection port • Tuned and polished extractor
- Baer extended ejector • Baer checkered slide stop • Baer speed trigger with crisp 4 lb. pull • Baer deluxe Commander style hammer, sear and disconnector • Baer beavertail grip safety with pad • Flat serrated steel mainspring housing • Bevelled mag well • Polished feed ramp and throated barrel • Baer extended tactical safety • High checkered front strap @ 30 lpi • Pistol tuned for total reliability • American Handgunner logo engraved on slide • Special double diamond black and blue VZ grips
- Special "AH" serial number prefix • Brushed hard chrome lower with matte rounds • Blue top end • Tactical package (slight rounding of pistol corners) • (2) Baer premium 8-round magazines



*Guaranteed to shoot 3" groups at
 50 yards (10 shot groups)
 Caliber: .45 ACP*



KENAI SPECIAL, 10mm, 5" ***The Only 1911 Pistol That Honors*** ***The Great State Of Alaska!***

It's easy to be overwhelmed by the majesty and grandeur that is Alaska. Les Baer has been so impressed by the beauty, the power and the soul of that magnificent state, he felt inspired to create a special 1911 that would pay homage to the uniqueness, the strength and the character of Alaska and its citizens. So, while attending a Friends of the NRA banquet in Kenai, Les finalized a cooperative effort with that group to create and produce just such a special 1911 model.

The KENAI SPECIAL is a tribute to both power and beauty. It's based on our award winning Premier II®, but it includes several special touches that truly make it one of a kind:

- 10mm chambering for impressive power and performance;
- A hard chrome finish on the complete pistol for both corrosion protection and eye catching good looks;
- Every pistol sold will be numbered, beginning with 001, and the numbers will be individually etched on the top of the slide;
- Each slide will also be engraved with a special bear paw logo with the "KENAI SPECIAL" model name.

Other features include:

- Baer NM steel frame, NM slide and NM barrel with stainless bushing • Baer 5" slide fitted to frame • Double serrated slide • Baer supported chamber 5" stainless steel barrel
- Low mount LBC adjustable sight with hidden rear leaf • Baer fiber optic front sight (green standard, red optional) • Lowered and flared ejection port • Tuned and polished extractor • Baer checkered slide stop • Baer speed trigger with crisp 4 lb. pull • Baer deluxe Commander hammer and sear • Beavertail grip safety with pad • flat serrated mainspring housing • Beveled mag well • Polished feed ramp and throated barrel • Baer extended safety • High checkered front strap @30 lpi
- Pistol tuned for total reliability • Baer Black Recon grips • (2) 9-round 10mm mags

Caliber: 10mm
Ask about our 1 1/2" guarantee!





BAER 1911 CUSTOM CARRY

***Comes with Night Sights!
Now available in 9mm
w/supported chamber***

**5" .45 ACP NOW
AVAILABLE IN
CALIFORNIA**

You'll look a long time to find a real custom pistol at a price this low. Baer's Custom Carry is perfectly suited to home defense, duty use or weekend plinking. Like all Baer pistols, it's guaranteed to shoot 3 inch groups at 50 yards. Features include:

Baer NM frame, NM slide and NM barrel with stainless bushing (see below for frame and slide options)
 • Slide fitted to frame • Baer deluxe fixed combat sight • Baer dovetail front sight, improved ramp style night sights • Double serrated slide • Baer speed trigger with crisp 4 lb pull • Baer deluxe hammer and sear • Baer tactical style extended ambi safety • Beveled mag well • Polished feed ramp and throated barrel • Tuned extractor • Baer extended ejector • Baer checkered slide stop • Lowered and flared ejection port • High checkered front strap @30 lpi • Tuned for total reliability • All corners rounded for tactical carry • Baer Premium Checkered grips • (2) 8-round premium magazine • Flat serrated mainspring housing

Calibers: 45 ACP, .38 Super w/supported chamber, 9mm w/supported chamber



NEW! CUSTOM CARRY COMMACHE 10mm WITH ROLO NIGHT SIGHTS

This superior carry pistol boasts most of the same features as our popular Custom Carry model, but it's built with the shorter Commache slide and barrel. It's also chambered for the hard hitting, high velocity 10mm caliber and it's equipped with high visibility night sights. Features include:

Baer NM frame • NM slide with rear serrations only • Slide fitted to frame • NM barrel with supported chamber • Rolo night sights • Stainless steel bushing • Baer speed trigger with 4 lb pull • Baer tactical ambi safety • Baer deluxe hammer and sear • Beveled mag well • Polished feed ramp and throated barrel • Tuned extractor • Baer extended ejector • Baer checkered slide stop • Lowered and flared ejection port • High checkered front strap @ 30 lpi • Tuned for total reliability • All corners rounded for tactical carry • Baer premium checkered grips • Flat serrated mainspring housing • 2 premium 10mm magazines with base pads





**NEW! CUSTOM CARRY
COMMANCHE 10mm
WITH LOW MOUNT
ADJUSTABLE NIGHT SIGHTS**

Imagine a compact carry pistol in hard hitting 10mm... with low mount adjustable night sights, to boot! You can stop imagining because this new Les Baer offering is the real deal. Its another variation on our popular Custom Carry model with high end stopping power and fully adjustable, high visibility night sights, as well. And, like all

Baer pistols, it's guaranteed to shoot 3 inch groups at 50 yards.

What a great combination for home defense, duty, licensed carry, or just plain plinking. Features include:

Baer NM frame, Commanche length NM slide and NM barrel with stainless bushing • Slide fitted to frame • LBC low mount adjustable night sights with dovetail ramp style front sight • Baer speed trigger with crisp 4 lb pull • Baer deluxe hammer and sear • Baer tactical style extended ambi safety • Beveled mag well • Polished feed ramp and throated barrel • Tuned extractor • Baer extended ejector • Baer checkered slide stop • Lowered and flared ejection port • High checkered front strap @ 30 lpi • Tuned for total reliability • All corners rounded for tactical carry • Baer Premium checkered grips • (2) premium 10 mm magazines • Flat serrated mainspring housing • Blued finish





BAER 1911 .38 SUPER COMMANCHE Comes with Night Sights!

This superior carry pistol boasts most of the same features as the popular Baer 1911 Custom Carry but it's built with the shorter Commanche slide and barrel, plus it's chambered for the fast and accurate .38 Super caliber. Features include:

Baer NM frame • NM slide with rear serrations only • NM barrel with supported chamber • Slide fitted to frame • Stainless steel bushing • Baer deluxe fixed combat rear sight with night sight • Baer dovetail front sight ramp style with night sight • Baer speed trigger with 4 lb. pull • Baer tactical ambi safety • Baer deluxe hammer and sear • Beveled mag well • Polished feed ramp and throated barrel • Tuned extractor • Baer extended ejector • Baer checkered slide stop • Lowered and flared ejection port • High checkered front strap @ 30 lpi • Tuned for total reliability • All corners rounded for tactical carry • Baer premium checkered grips • Flat serrated mainspring housing • (2) 9-round premium magazines with base pads

Caliber: .38 Super w/supported chamber, 9mm w/supported chamber

Finish: Blue finish or optional chrome or DuPont S finish

Note: Available in steel only



BAER 1911 ULTIMATE TACTICAL CARRY 5" MODEL

The new Baer Ultimate Tactical Carry pistol is a serious self defense pistol, designed by firearms professionals who teach others to survive in a dangerous world. This distinctive pistol is extremely practical and includes virtually everything you need and nothing you don't. That makes it an exceptional value, as well as a dependable companion that you'll own and trust for a lifetime. Features include:

- Baer steel NM frame • Baer steel NM slide with front and rear serrations • Slide fitted to frame • Baer NM barrel with stainless match bushing • LBC deluxe fixed combat rear sight with tritium inserts • Baer dovetail front sight with tritium insert • Lowered and flared ejection port • Baer checkered slide stop • Baer extended ejector • Combat extended safety • Baer aluminum match trigger • Baer deluxe Commander hammer and sear • Crisp 4 lb. pull • Baer tuned extractor • Baer beavertail grip safety with pad • High checkered front strap @ 30 lpi • Flat checkered mainspring housing at 20 lpi • Beveled magazine well • Polished feed ramp and throated barrel • Complete pistol rounded for tactical use • Blued finish on complete pistol • Deluxe special slim line grips • (3) stainless steel 8-round premium magazines

Calibers: .45 ACP, .38 Super w/supported chamber, 9mm w/supported chamber



BAER 1911 S.R.P.®

(Swift Response Pistol)

Comes with Night Sights!

**.45 ACP NOW
AVAILABLE IN
CALIFORNIA**

Based on a proven law enforcement model, the S.R.P. is an uncompromising single stack performer that's as familiar as an old shoe and delivers total reliability, uncanny accuracy, and enough power to deal with virtually any situation.

- Baer steel NM frame • Baer steel NM slide with front and rear serrations • Slide fitted to frame • Baer NM barrel with stainless match bushing • Baer deluxe fixed combat sight • Baer dovetail ramp type front sight • Lowered and flared ejection port • Baer checkered slide stop • Baer extended ejector • Baer tactical style ambi safety • Baer speed trigger • Baer checkered flat mainspring housing • Checkered front strap @ 30 lpi • Fitted and tuned extractor • Beveled mag well • Complete tactical action job • Baer beavertail safety with pad • Baer deluxe Commander hammer and sear • Tritium night sights installed front and rear • Deburred for tactical carry • DuPont S coating on complete pistol for maximum corrosion resistance • Baer Premium Checkered grips • Tuned for total reliability • Test fired with Federal 230 grain Hydra-Shok ammo and Remington Sabre 230 grain H.P. ammo and guaranteed to shoot 2 1/2" groups at 50 yards • (3) 8-round premium magazines • Special wooden presentation box with glass lid

Calibers: .45 ACP

Options: Commanche Model

Ask about our special 1 1/2" guarantee!





BAER 1911 MONOLITH

Patent No: US 6,345,463

Baer Custom's MONOLITH is a real monument in steel. It's one bad boy that's as tough and rugged as it looks. The MONOLITH's steel frame has an extra long dust-cover (the only 1911 in the business) that matches the length of the slide. That gives the five-inch slide and the frame a blocky, one-piece appearance...really an awesome look. It also gives the MONOLITH some extra heft on the front end which helps reduce muzzle flip. If you compete in USPSA Limited Class or in Centerfire Bullseye matches, you know the kind of edge that can give you. We guarantee 3" groups at 50 yards. Features include:

- Baer N.M. steel Monolith frame • Baer Monolith flat bottom double serrated slide • Slide fitted to frame
- Baer NM barrel and stainless bushing • Low mount LBC adjustable sight with hidden rear leaf • Baer dovetail front sight • Lowered and flared ejection port • Tuned and polished extractor • Baer extended ejector • Baer checkered slide stop • Baer speed trigger with crisp 4 lb pull • Baer deluxe Commander hammer and sear • Baer beavertail grip safety with pad • Flat serrated mainspring housing • Beveled mag well • Polished feed ramp and throated barrel • Baer extended ambi safety • High checkered front strap @ 30 lpi • Pistol tuned for total reliability • Baer Premium Checkered grips • Blued finish • (2) 8-round premium magazines

Caliber: .45 ACP, .38 Super w/supported chamber, 9mm w/supported chamber, 40 S&W w/supported chamber
Ask about our special 1½" guarantee.



BAER 1911 MONOLITH HEAVYWEIGHT

Patent No: US 6,345,463

Here's another Monolith model with still more weight added - a full 3.5 oz. over and above the weight of our popular Premier II®. All the weight has been added along the center line of the pistol on the dust cover so the balance is excellent. The added weight is a great way to reduce muzzle flip and felt recoil without adding the extra length and expense of a compensator. Features are exactly the same as the Monolith with the addition of the heavier frame. We guarantee 3" groups at 50 yards. (2) 8-round premium magazines.

Caliber: .45 ACP, .38 Super w/supported chamber, 9mm w/supported chamber, 40 S&W w/supported chamber
Ask about our special 1½" guarantee.



**BAER 1911
MONOLITH
COMMANCHE
Comes with Night Sights!**

Patent No: US 6,477,802

Like our original Monolith, this reduced size version is tough as they come. The steel frame has an extra long dust cover that matches the length of the slide. That gives the 4 1/4" slide and the frame a blocky, one-piece appearance. It also gives the Monolith Commanche extra heft on the front end which helps reduce muzzle flip. Guaranteed to shoot 3" groups at 50 yards. In addition to all the

features of the original Monolith (except for front cocking serrations), the Commanche also includes:

- Tritium night sights front and rear and our deluxe fixed rear sight
- Edges rounded for tactical carry

Caliber: .45 ACP, .38 Super w/supported chamber, 9mm w/supported chamber



**BAER 1911
MONOLITH COMMANCHE
HEAVYWEIGHT
Comes with Night Sights!**

Patent No: US 6,477,802

Exactly like the Monolith Commanche described above but the dust cover is slightly thicker to add an extra 2 oz. of weight, and the dust cover is flat on the bottom like the full size Monolith Heavyweight.

Caliber: .45 ACP, .38 Super w/supported chamber, 9mm w/supported chamber



**BAER 1911
STINGER MODEL
Comes with Night Sights!**

You asked for "small and efficient" and that's what we've given you! Our new Stinger model is designed specifically for easy carry with our shorter length grip frame (Officer's style) and our own Commanche top end. It features the utmost in reliability and accuracy in a special package that includes our new 7-round stinger stainless magazine. It's a sure fire winner! Blued model pictured; also available in stainless version. Features include:

- Baer N.M. Stinger frame • Baer Commanche slide with rear serrations • Slide fitted to frame • Baer NM barrel with stainless bushing • Low mount combat fixed rear sight • Dovetail front sight • Lowered and flared ejection port • Tuned and polished extractor • Baer extended ejector • Baer checkered slide stop • Baer speed trigger with crisp 4 lb pull • Baer deluxe Commander hammer and sear • Baer beavertail grip safety with pad • Flat serrated mainspring housing • Beveled mag well • Polished feed ramp and throated barrel • Baer extended ambi safety • High checkered front strap @ 30 lpi • Edges rounded for tactical carry • Pistol tuned for total reliability • Baer Premium Checkered grips • Blued finish • (2) 7-round premium Stinger magazines

Caliber: .45 ACP



**BAER 1911
STINGER MODEL,
STAINLESS STEEL
Comes with Night Sights!**

This model of our popular little Stinger model features a stainless steel frame and slide. This just could be the most perfect compact sized pistol ever made.

Caliber: .45 ACP



**LES BAER 1911
GT MONOLITH STINGER**
Comes with Rolo Night Sights
Now available in 9mm w/supported chamber

The GT Monolith Stinger is perhaps the most extreme high performance carry gun ever offered by Les Baer custom.

That's appropriate since it was inspired by the ultra rare 1,000-plus horsepower Shelby Cobra in Les Baer's personal collection of extreme muscle cars. It combines the best features of Les Baer's compact Stinger with the beefy look and slightly heavier muzzle weight of Les' revolutionary Monolith. The Stinger frame is Officer-size so it's perfect for concealed carry, but like the Monolith, the dust cover is extra long and it matches the length of the slide. That gives the frame and size a blocky, one-piece appearance, and it adds weight on the front end that reduces muzzle flip. The 4 1/4" slide is also Commanche length which is somewhat smaller than our standard 5" slide, and the dust cover is round on the bottom like the full size Monolith. All other features are the same as our popular Monolith Commanche but the GT Monolith Stinger comes standard with Rolo Night Sights and (2) magazines.

Caliber: .45 ACP, .38 Super w/supported chamber, 9mm w/supported chamber
Finish: Blue finish is standard; chrome or Dupont S finish is optional



**LES BAER 1911
GT MONOLITH STINGER
HEAVYWEIGHT**
Comes with Rolo Night Sights
Now available in 9mm w/supported chamber

Another model that incorporates the best features of the popular compact Stinger with the ruggedness and heft of the Monolith. But, this heavyweight Monolith Stinger has an even slightly heavier Monolith style dust cover with 2 oz. of added weight which really helps reduce muzzle flip on followup shots. The dust cover on the Heavyweight model has a flat bottom.

Caliber: .45 ACP, .38 Super w/supported chamber, 9mm w/supported chamber
Finish: Blue finish is standard; chrome or Dupont S finish is optional



LES BAER 1911 GT MONOLITH STINGER, CHROME FINISH

***Possibly the Best Looking and Best
Performing Compact Carry Gun Ever***



As featured in the December, 2015 issue of *Guns & Ammo* magazine, the chrome finished version of Les Baer's GT Monolith Stinger is easily the sexiest looking member of the Monolith Stinger family of high performance, compact 1911 carry guns. Features are identical to the Blued and Dupont S-finished Monolith Stingers, but the sleek looking chrome model is a true testament to the breathtakingly beautiful four-wheel powerhouse that inspired it. Because this compact dynamo is from Les Baer, high performance mechanics are the highest priority. But no reason it can't look as good as it shoots.





NEW!
STINGER MONOLITH
COMMANCHE 10mm
WITH ROLO NIGHT SIGHTS

The GT Monolith Stinger is perhaps the most extreme high performance carry gun ever offered by Les Baer Custom. That's appropriate since it was inspired by the ultra rare 1,000-plus horsepower Shelby Cobra in Les Baer's personal collection of extreme muscle cars. It combines the best features of Les Baer's compact Stinger with the beefy look and slightly heavier muzzle weight of Les' revolutionary Monolith. The Stinger frame is Officer-size, so it's perfect for concealed carry, but like the Monolith, the dust cover is extra long and it matches the length of the slide. That gives the frame and slide a blocky, one-piece appearance, and it adds weight on the front end that reduces muzzle flip. The 4 1/4" slide is also Commanche length which is somewhat smaller than our standard 5" slide, and the dust cover is round on the bottom like the full size Monolith. All other features are the same as our popular Monolith Commanche but this new Stinger model comes standard with Rolo Night Sights, it's chambered in powerful 10mm, and it comes with (2) 10 mm mags and black recon grips.





BAER 1911 .38 SUPER STINGER Comes with Night Sights!

Now available in 9mm w/supported chamber

Like our two popular Stinger models on page 13, this Stinger was designed as an efficient concealed carry pistol. The compact size features a Commanche top end and a shorter grip frame — similar to an Officer's model. But it's built for the super accurate, high velocity .38 Super round or popular 9mm. It's a perfect combination for backup or home defense. Features include:

Caliber: .38 Super w/supported chamber, 9mm w/supported chamber
Note: Available in steel only



BAER 1911 GUNSITE PISTOL

**Honoring A Tradition Of
Superior Firearm Training**

The Baer 1911 Gunsite pistol, with its distinctive Raven logo engraved on the slide and on the special grips, is a state of the art custom pistol designed and built with common sense for serious shooters. The serial number has a GAI prefix (Gunsite Academy, Inc. It's meant to be used daily by people who demand nothing less than the highest levels of performance and precision. Features include:

- Baer NM frame • Baer NM steel slide, double serrated and hand fitted to frame • Baer NM barrel with stainless steel bushing • Baer fixed rear sight • Baer dovetail front sight with night sight insert
- Baer solid match trigger, 4 to 4 1/2 lb. trigger pull • Baer deluxe Commander hammer and sear
- Baer extended tactical thumb safety • Beveled mag well • Polished feed ramp and throated barrel
- Tuned extractor • Baer extended ejector • Baer checkered slide stop • Baer checkered mag catch
- Lowered and flared ejection port • High checkered front strap (hand checkered @ 30 lpi) • flat serrated mainspring housing • Baer high sweep beavertail • All corners rounded for tactical carry
- Tuned for total reliability • Blued finish on complete pistol • Deluxe wood grips with Gunsite logo
- Special Gunsite logo engraved on the slide • (2) 8-round mags • Serial numbers begin with "GAI" prefix

Caliber: .45 ACP



LES BAER 1911 BLACK BAER **9mm Capacity In Compact Carry Size**

Since concealed carry has become so popular, the search for suitable carry guns has moved front and center on the wish list of many American gun owners. Of all the comments and requests received by Les Baer Custom, three requirements are the most common:

- 1) A 1911 style, single action pistol built with Les Baer's unique blend of reliability and accuracy;
- 2) A compact size, suitable for comfortable concealed carry inside the waistband, in a hip holster, or virtually anywhere else a CCP holder chooses to carry a defense pistol;
- 3) Chambering in a caliber that offers higher magazine capacity than most 1911 style pistols but still delivers ample stopping power in emergencies, and is readily available in many factory loads or as components for reloaders.

The search is over. The 1911 BLACK BAER is a compact little powerhouse based on Les' popular Commanche pistol and chambered in high velocity, hard hitting 9mm. As with all Les Baer pistols, the BLACK BAER is built with the same attention to detail and precision engineering that have made Les Baer 1911s a legend in the firearms industry. The BLACK BAER is guaranteed to deliver 3" groups at 50 yards so, even with its reduced size, it's a serious shooter. Standard features include:

Baer steel NM frame, NM slide and NM supported 9mm barrel with Baer stainless bushing • Slide fitted to frame • Baer deluxe fixed rear combat night sight • Baer dovetail front night sight • Rear serrated slide • Baer speed trigger with crisp 4 lb. pull • Baer deluxe hammer and sear • Baer tactical extended combat safety • Beveled magazine well • Polished feed ramp and throated barrel • Tuned extractor • Baer extended ejector • Baer checkered slide stop • Lowered and flared ejection port • High checkered front strap @ 30 lpi • Flat checkered mainspring housing @ 20 lpi • Tuned for total reliability • All corners rounded for tactical carry • Black recon grips • Dupont S coating on complete pistol for maximum corrosion resistance • (2) 9-round magazines

Calibers: 9mm Supported chamber



BAER 1911 BOSS .45

A fitting tribute to the high performance 1970s muscle car that inspired it. Les Baer is still the king of custom built 1911 pistols in addition to being a well known aficionado of high performance American muscle cars. That's why Les named this 1911 model after the Boss 429 Mustangs he admires above all other cars. Like our entire pistol line, this exciting .45 is based on our popular Premier II, but it has enough thoughtful extra touches to really make it the Boss of custom .45s. As with our other pistols, the Boss is guaranteed to shoot 3" groups at 50 yards. Special features include:

- Slide fitted to frame • Rear cocking serrations on the slide • Baer fiber optic front sight (red) • Flat mainspring housing, checkered at 20 lpi • Extended combat safety • Special tactical package • Chromed complete lower • Blued slide • (2) 8-round premium magazines

Caliber: .45 ACP



If you own a Boss 429 Mustang, the "KK" number can be engraved on the side of the slide for an additional \$250 charge. The KK number was assigned to all Boss 429 Mustangs built at the Kar Kraft plant in Brighton, Michigan.



BAER 1911 HEMI "572"



High performance guns and high performance cars. Nobody in America has done a better job of demonstrating his passion for these two types of precision equipment than Les Baer. For his entire adult life, Les has been a leading force not only in the design and production of classic custom firearms, but also a serious, knowledgeable aficionado of finely tuned and beautifully finished four wheel speed machines, from dragsters to 1970s American muscle cars.

This sleek custom pistol is another winner based on Les' world acclaimed 1911 Premier II[®] pistol, but it was inspired by Chrysler's fast and fearsome 1970 Hemi Cuda, the screamer that dominated the streets and stole the hearts of car lovers during the muscle car era. Like Les Baer's own '70 Hemi Cuda, the Les Baer Hemi "572" boasts sleek, classic lines and high tech features that guarantee powerful, breathtaking performance. Like other Les Baer pistols, the Hemi "572" is guaranteed to shoot 3" groups at 50 yards, right out of the box.

Special features include:

Double serrated slide • Slide fitted to frame • Baer fiber optic front sight with green insert • Hex head grip screws • Flat mainspring housing checkered at 20 lpi • Special tactical package with ambi safety, VZ black recon grips • Complete hard chrome finish on all major components • Dupont S coating on slide stop, ambi safety, mag catch and mag catch lock, hammer, trigger, barrel, plunger tube, hammer pin, sear pin, recoil plug, hex head grip screws • (2) 8-round premium magazines

Caliber: .45 ACP



Hemi Cuda is a trademarked name of Chrysler Corporation



SHOOTING USA CUSTOM PISTOL 5" MODEL

When popular television host Jim Scoutten came to Les Baer Custom with his television crew in November of 2010 to shoot an episode for his popular Shooting USA series, he became an immediate fan of Les Baer's 1911 pistols. At the end of two and one-half days of shooting, Jim and Les Baer agreed to offer a Shooting USA 1911 pistol, built by Les Baer Custom. The special pistol includes most of the features of Les Baer's flagship Premier II® pistol (see page 2) and also comes with:

- Tactical extended safety • A special serial number prefix with "S USA" and the number • The famous *Shooting USA* logo engraved on the right side of the slide • Blued finish • (2) 8-round stainless steel magazines

Calibers: .45 ACP

"I've seen how Les Baer guns are built. We've told the story on TV. You'll never find a better built 1911, with every part hand fitted for extraordinary accuracy and performance. When we finished taping in the factory, I told Les he isn't charging enough because his guns are worth way more than his price."

Jim Scoutten
Shooting USA



BAER 1911 ULTIMATE MASTER 5" MODEL

**.45 ACP NOW
AVAILABLE IN
CALIFORNIA**

A race-ready competition model built with a traditional 5" barrel and slide. It's guaranteed to shoot 3" groups at fifty yards. Features include:

Baer NM steel frame and NM slide with blued finish • Baer NM barrel and stainless steel bushing • Low-mount LBC adjustable sights with hidden rear leaf • Baer dovetailed front sight • Double serrated slide • Fitted slide to frame • Lowered and flared ejection port • Two-piece beveled mag well • High checkered front strap @ 30 lpi • Checkering underneath trigger guard @ 30 lpi • Serrated rear of slide @ 40 lpi • Serrated top of slide • Baer deluxe Commander hammer and sear • Baer extended ambi safety • Tuned extractor • Baer extended ejector • Baer checkered slide stop • Baer beavertail grip safety with pad • Baer mag catch • Baer speed trigger with crisp 3 1/2 lb action job • Polished feed ramp and barrel throat • Baer Premium Checkered grips • Tuned for total reliability • Blued finish • (2) 8-round premium mags

Calibers: .45 ACP, .38 Super w/supported chamber, 9mm w/supported chamber

Ask about our special 1 1/2" guarantee!



BAER 1911 ULTIMATE MASTER 6" MODEL

It's another full house competition model that's built to go racing. It comes equipped with our 6" slide, and it's guaranteed to shoot 3" groups at fifty yards. Features include:

Baer NM steel frame and NM slide with blued finish • Baer NM 6" barrel and stainless steel bushing • Low-mount LBC adjustable sights with hidden rear leaf • Baer dovetailed front sight • Double serrated slide • Fitted slide to frame • Lowered and flared ejection port • Two-piece beveled mag well • High checkered front strap @ 30 lpi • Checkering underneath trigger guard @ 30 lpi • Serrated rear of slide @ 40 lpi • Serrated top of slide • Baer deluxe Commander hammer and sear • Baer extended ambi safety • Tuned extractor • Baer extended ejector • Baer checkered slide stop • Baer beavertail grip safety with pad • Baer mag catch • Baer speed trigger with crisp 3 1/2 lb action job • Polished feed ramp and barrel throat • Baer Premium Checkered grips • Tuned for total reliability • Blued finish • (2) 8-round premium mags

Calibers: .45 ACP, .38 Super w/supported chamber, 9mm w/supported chamber

Ask about our special 1 1/2" guarantee!



BAER 1911 CMP-LEGAL NATIONAL MATCH HARDBALL PISTOL

**.45 ACP NOW
AVAILABLE IN
CALIFORNIA**

For demanding CMP matches, this super accurate match gun is guaranteed to shoot 10-shot, 3 inch groups at 50 yards with ball ammo. The test target is included. Features include:

Baer NM steel frame, NM slide and NM barrel with stainless bushing • Slide fitted to frame • Low mount LBC adjustable sight with hidden rear leaf • Baer Dovetail front sight with undercut post • Baer match trigger with crisp 4 lb pull • Rear serrated slide • Polished feed ramp and throated barrel • High checkered front strap @ 30 lpi • Flat serrated mainspring housing • Beveled mag well • Lowered and flared ejection port • Tuned extractor • Baer extended ejector • Baer checkered slide stop • Baer Premium Checkered grips • Pistol tuned for total reliability • Blued finish • (1) 7-round premium magazine

Calibers: .45 ACP



BAER 1911 BULLSEYE WADCUTTER PISTOL WITH BAER OPTICAL SCOPE MOUNT

(Scope not included)

A real tack driver for tough centerfire matches. It's designed for wadcutter loads only and it's guaranteed to shoot 2 1/2" groups at 50 yards. Test target included. Features include:

Baer NM frame, NM slide and NM barrel with stainless bushing • Slide fitted to frame • Polished feed ramp and barrel throat • Double serrated slide • Baer speed trigger with crisp 3 1/2 lb pull • Baer deluxe hammer and sear • Baer beavertail grip safety with pad • High checkered front strap @ 30 lpi • Flat checkered mainspring housing @ 20 lpi • Lowered and flared ejection port • Tuned extractor • Baer extended ejector • Baer checkered slide stop • Beveled mag well • Tuned for total reliability • Blued finish • Baer Premium Checkered grips • (1) 8-round premium magazine

Calibers: .45 ACP. Other calibers on request.

Ask about our special 1 1/2" guarantee!

Options: LBC Lo-Mount Adjustable Sights (same as the sights on the Premier II® or a slide mount for optics.



BAER 1911 P.P.C. DISTINGUISHED MATCH

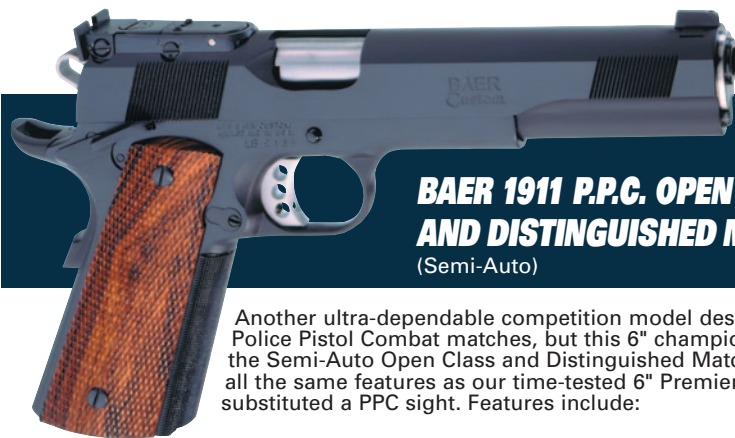
(Semi-Auto)

**.45 ACP NOW
AVAILABLE IN
CALIFORNIA**

This competition model is designed specifically for the NRA Police Pistol Combat Matches. This 5" model is a perfect fit for "Distinguished" matches. Our P.P.C. Distinguished model includes all the features of our popular Premier II, the flagship of the Les Baer line, but we have substituted a PPC sight. Features include:

Baer NM steel frame, NM slide and NM barrel with stainless bushing • Slide fitted to frame • Double serrated slide • PPC sight • Baer dovetail front sight • Lowered and flared ejection port • Tuned and polished extractor • Baer extended ejector • Baer checkered slide stop • Baer speed trigger with crisp 4 lb pull • Baer deluxe Commander hammer and sear • Baer beavertail grip safety with pad • Flat serrated mainspring housing • Beveled mag well • Polished feed ramp and throated barrel • Baer extended ambi safety • High checkered front strap @ 30 lpi • Pistol tuned for total reliability • Baer Premium Checkered grips • Blued finish • (1) 8-round premium magazine

Caliber: .45 ACP; 9mm w/supported chamber
Ask about our special 1 1/2" guarantee.



BAER 1911 P.P.C. OPEN CLASS AND DISTINGUISHED MATCH

(Semi-Auto)

Another ultra-dependable competition model designed for NRA Police Pistol Combat matches, but this 6" champion is aimed at the Semi-Auto Open Class and Distinguished Match. It includes all the same features as our time-tested 6" Premier II® but we have substituted a PPC sight. Features include:

Baer NM steel frame, NM slide and NM barrel with stainless bushing • Baer 6" slide fitted to frame • Double serrated slide • PPC sight • Baer dovetail front sight • Lowered and flared ejection port • Tuned and polished extractor • Baer extended ejector • Baer checkered slide stop • Baer speed trigger with crisp 4 lb pull • Baer deluxe Commander hammer and sear • Baer beavertail grip safety with pad • Flat serrated mainspring housing • Beveled mag well • Polished feed ramp and throated barrel • Baer extended ambi safety • High checkered front strap @ 30 lpi • Pistol tuned for total reliability • Baer Premium Checkered grips • Blued finish • (1) 8-round premium magazine

Caliber: .45 ACP; .9mm w/supported chamber
Ask about our 1 1/2" guarantee!



BAER 1911 CONCEPT I®

**.45 ACP NOW
AVAILABLE IN
CALIFORNIA**

Baer's line of Concept pistols pushes the envelope for the perfect combination of ahead-of-the-art design, true custom craftsmanship, unparalleled performance, and the best value in the firearms industry. All Concept® pistols come with a crisp 4 lb. pull and all are guaranteed to deliver 3" groups at 50 yards.

The Baer Concept I® is a full size custom 1911 with features that include:

- Baer steel NM frame, NM slide and NM barrel with Baer stainless bushing
- Slide fitted to frame
- Double serrated slide
- LBC adjustable deluxe low mount rear sight with hidden rear leaf
- Baer dovetail front sight
- Baer beavertail grip safety w/pad
- Baer checkered slide stop
- Tuned Baer extractor
- Baer extended ejector
- Baer deluxe hammer and sear
- Lowered and flared ejection port
- Polished feed ramp and throated barrel
- Baer flat serrated mainspring housing
- Beveled magazine well
- Baer extended ambi safety
- Baer fitted speed trigger with action job
- Baer Premium Checkered grips
- Blued finish
- Tuned for total reliability
- (2) 8-round premium magazines

CALIBERS: .45 ACP



BAER 1911 CONCEPT II®

**.45 ACP NOW
AVAILABLE IN
CALIFORNIA**

Another full size 1911 model. It's identical to our Concept I model except a Baer deluxe fixed combat sight replaces the LBC adjustable. (See Concept I® for full list of standard features.)

Note: Concept I® and Concept II® do not include a checkered front strap. All other Concept pistols include checkered front straps. Commanche pistols have rear-serrated slides only.



BAER 1911 CONCEPT III®

This full size government model is built on a Baer stainless steel NM frame matched to a Baer blued steel NM slide. The rear sight are LBC adjustable, and the front strap of the frame is checked at 30 lpi. All other features are standard for the Concept® line. (See Concept I® for full list of standard features.)



BAER 1911 CONCEPT IV®

As pictured, the Concept IV® is a ringer for Concept III® but with a Baer deluxe fixed combat rear sight replacing the LBC adjustable. (See Concept I® for full list of standard features.)



**BAER 1911
CONCEPT V®**

A full size, all-stainless beauty. Both the NM frame and NM slide are stainless steel topped with a LBC adjustable rear sight. The front strap is checkered at 30 lpi.(See Concept I® for full list of standard features.)



**BAER 1911
CONCEPT V® 6"**

Identical to the all-stainless Concept V® but with the addition of a 6" long stainless slide and 6" barrel.



BAER 1911 CONCEPT VI®

Identical to the Concept V® but with a Baer deluxe fixed combat rear sight. (See Concept I® for full list of standard features.)



BAER 1911 CONCEPT VII® Comes with Night Sights!

One of two Concept® guns in our reduced "Commanche" size. Concept VII® is all blued steel and comes with a Baer deluxe fixed combat rear sight. The front strap is checkered at 30 lpi. (See Concept I® for full list of standard features.)

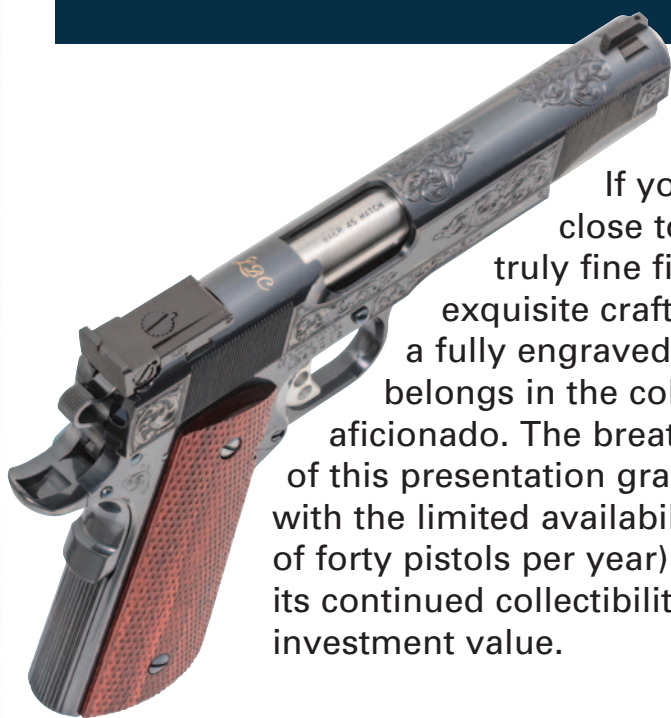


BAER 1911 CONCEPT VIII® Comes with Night Sights!

Another reduced size Commanche. This one is all-stainless steel... both a Baer stainless NM frame and NM slide...with Baer deluxe fixed combat rear sight. The front strap is checkered at 30 lpi. (See Concept I® for full list of standard features.)



**LIMITED EDITION
LES BAER
PRESENTATION
GRADE 1911**



If you or someone close to you admires truly fine firearms and exquisite craftsmanship, here's a fully engraved masterpiece that belongs in the collection of a true aficionado. The breathtaking beauty of this presentation grade 1911 coupled with the limited availability (a maximum of forty pistols per year) will help ensure its continued collectibility and probable investment value.

Each Les Baer Presentation Grade 1911 is actually a fully equipped Baer Premier® II which has been enhanced with the addition of these special features:

- Minutely detailed hand-chiseled engraving, an old world art form rarely seen in today's high tech world;
- Special Charcoal Bluing on all polished surfaces, which have all been hand prepared with ultra-fine 1200-grit material;
- The handsome "LBC" engraving on the top of the slide is inlaid with gold;
- At your option, your name or the name of the recipient can be engraved on the slide with the legend: "To (Name) by Les Baer";
- Each pistol comes with a special presentation box.



HIGH PERFORMANCE COMPONENTS & PARTS



**LES BAER
CUSTOM, INC.**

Performance.
It's everything.





Standard
1911 match
frame

1911 Stinger frame with
checkered front strap @ 30
lpi and cut for Baer
beavertail

Our superior match frames are much more than just the foundation on which we build our guns -- they're the primary building block on which our business and our reputation have been built, as well.

No 1911 frames anywhere compare to Baer frames. That's why they've become the hands-down favorites of so many other custom gunsmiths. We hold the tightest tolerances in the industry to guarantee consistency. We can guarantee that consistency because we do all the machining ourselves on our own CNC equipment. And all our frames come standard with beveled mag wells.

Note: Stainless steel frames are also available, as well as reduced Commanche" and "Stinger" size frames. All Baer frames are available separately or paired with Baer slides, individually hand fitted for the best possible fit.

BAER STEEL FRAMES, .45 ACP FEED RAMP

Standard 1911, Commanche Size or Stinger Size

Available as:

- Standard 1911 Match Frame
- 1911 Match Frame with .250 radius cut to fit Baer's beavertail grip safety
- 1911 Match Frame with .250 radius cut and checkered front strap (30 lpi standard; 20 lpi by special order)

BAER PREMIUM STAINLESS STEEL FRAMES, .45 ACP FEED RAMP

*Standard 1911, Commanche Size or Stinger Size
(not pictured)*

Available as:

- 1911 Match Frame with .250 Radius cut to fit Baer's beavertail grip safety
- 1911 Match Frame with .250 radius cut and checkered front strap @ 30 lpi

BAER MONOLITH FRAMES

Les Baer Custom's patented, all-steel Monolith frames are also available (not pictured).

Available as:

- Monolith Match Frame with Extended Dust Cover (Patent No: US 6,345,463)
- Monolith Heavyweight Match Frame with Extended Dust Cover (Patent No: US 6,345,463)
- Monolith Commanche National Match Frame with Extended Dust Cover (Patent No: US 6,477,802)
- Monolith Commanche Heavyweight National Match Frame with Extended Dust Cover (Patent No: US 6,477,802)



5" Double serrated slide w/hidden rear leaf LBC low mount cut and dovetail front sight cut



5" Double serrated slide



6" Slide w/hidden rear leaf LBC adjustable low mount cut



Commanche length slide w/no sight cut



Flat bottom double serrated Monolith slide

Baer 1911 slides have set the standard for premium quality components. They're quality engineered with features no other 1911 slides can match:

- Precision machined from extremely high quality steel;
- Heat treated to 40 R.C.;
- Precision machined on our own state of the art CNC equipment after heat treating to prevent warpage
- Rail dimensions machined to ultra-precise, uniform specifications;
- Barrel channel is precision bored;
- Slides have 9mm firing pin holes to keep primer flow to a minimum;
- The recoil plug is machined all the way through, so there's no more drilling or reaming required to install reverse recoil plugs;
- Precision slide serrations on rear;
- Lowered ejection port;
- Cocking serrations on front of slide (optional on Commanche length slides)

Baer slides are available in the following variations and options:

- Machined steel or stainless steel;
- Standard 1911 length or shortened Commanche length;
- With or without cut for LBC low mount rear sight with hidden rear leaf;
- With double serrations, with rear serrations only or with no serrations.
- Flat bottom double serrated Monolith slide;
- Calibers: 9mm, .38 Super, 10mm, 40 S&W or .45 ACP. (Stainless slides and Commanche slides in .45 ACP only)

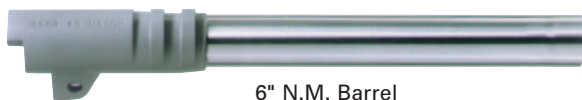
BAER 6" SLIDE

In a handgun, one extra inch of length means more than just being one inch closer to your target. It means dramatically increased velocity.

Les Baer Custom offers the best six-inch 1911 slides on the market. That's six inches long without compensators! Like all Baer components these match grade slides are precision machined from top grade steel. They're not welded; they're all one-piece construction. What a great edge for a USPSA Limited Class gun, a Bullseye Wadcutter gun, or for any .45 that's expected to deliver peak performance and accuracy. 6" slides are also available in 9mm and .38 Super.



5" N.M. Barrel



6" N.M. Barrel



5" N.M. Barrel w/Supported Chamber

Whether you're building or upgrading a 1911, it will only be as accurate as the barrel. Our match grade 1911 barrels are the best on the market. They're made from 4350 steel. All critical areas are oversized for proper fitting. The rear locking lug is also slightly oversized to allow you to obtain a central firing pin hit. And the smoothness and consistency of the bores is really remarkable. Several options available:

- Baer 4 1/4" N.M. Commanche Barrel, .45 ACP
- Baer 4 1/4" N.M. Commanche Barrel, .45 ACP (Supported)
- Baer 5" N.M. Barrel, .45 ACP
- Baer 5" N.M. Barrel, .45 ACP (Supported)
- Baer 5" N.M. Barrel, 40 S&W (Supported)
- Baer 5" N.M. Barrel, 9mm (Supported)
- Baer 5" N.M. Barrel, .38 Super (Supported)
- Baer 6" N.M. Barrel, .45 ACP
- Baer 6" N.M. Barrel, .45 ACP (Supported)
- Baer 6" N.M. Barrel, 9mm (Supported)
- Baer 6" N.M. Barrel, .38 Super (Supported)
- Baer 4 1/4" N.M. Commanche barrel, .38 Super (Supported)



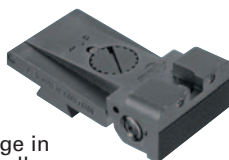
Rolo Low-Mount Adjustable Sight

This brand new sight is perhaps the most compact low-mount adjustable sight on the market. It fits the same dovetail cut as our popular LBC Adjustable Low Rear Sight, but the rear leaf requires a different cut for the rounded rear of the Rolo sight. Fully adjustable for both elevation and windage.



Rolo Low-Mount Adjustable Sight With Tritium Inserts

Our new Rolo low-mount adjustable sights are also available with tritium inserts so they become fully adjustable night sights. The illuminated tritium inserts are also an advantage in target shooting and competition because they allow you to find a sight picture faster in any lighting conditions.



Right or Left J-Style Slide Cocker

Excellent method of cocking a slide equipped with a scope mount. Machined from aluminum.



Les Baer Custom Adjustable Low Mount Rear Sight

The best adjustable sight in the world for target shooting.



LBC Adjustable Sight With Night Sights

The same LBC sights described above but with tritium inserts installed on a special leaf. Excellent for low light applications.



Baer Deluxe Fixed Combat Sight

A superior tactical style sight and a very low profile. It also incorporates a no-snag design.



Baer Deluxed Fixed Combat Sight With Fiber Optic

Baer Deluxe Fixed Combat Sight With Tritium Night Sights

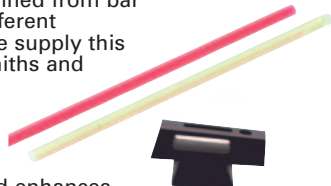
Baer Dovetail Front Sight

This blank dovetail front sight is machined from bar stock. It can be contoured to many different configurations to meet your needs. We supply this same sight to many prominent gunsmiths and manufacturers.



Fiber Optic Front Sight

Excellent light gathering capability and enhances front sight acquisition. Dovetail .330 X 65 degrees, .125 wide post, .185 high, .060 diameter. Red and green fiber optic.





Baer Dovetail Front Sight With Tritium Insert

This fully contoured and finished front sight is ready for gunsmith installation.

Baer 1911 Scope Mount

An excellent choice for mounting either a traditional scope or a dot sight on any 1911 pistol.



Baer Premium Checkered Grips

Les Baer Custom offers two exceptional sets of wood grips for 1911 pistols, both are quality made from breathtakingly beautiful wood. One has a flat bottom and has not been cut out for housing pin. The other is a distinctive double-diamond pattern.

1911 Les Baer "Racer Logo" Pistol Grips

1911 Grip Screws

Blued or stainless.

1911 Grip Screw Bushings

Blued or stainless.

Hex Head Grip Screws For 1911

Sold in sets of four. Specify blue or stainless steel.

Baer Standard 1911 Mag Catch

Available without button only. Steel or stainless.

Baer Mag Catch Lock

Blue only. Precision machined.

Baer Extended Ejector

Precision machined from bar stock and heat treated to strict tolerances. Specify .45 ACP Government Model, .45 ACP Commander Model, 9mm Government Model, or .38 Super Government Model.





Baer Machined Firing Pin Stop

This firing pin stop is machined from bar stock to precision tolerances. This is absolutely the best firing pin stop on the market.



1911 Pin Set

All the pins for the 1911 pistol.



1911 Hammer Strut

Baer Firing Pin

A precision made firing pin with .067 diameter that fits our own slides. Prevents the primer from flowing.

Baer Match Grade Extractor

Precision machined and heat treated. Available in .45 ACP or in .38 Super/9mm.



Baer Oversize Match Barrel Bushing

Stainless steel.

Baer Oversize Match Barrel Bushing, Commanche Size

Stainless steel.



Baer Reverse Recoil Plug

Stainless steel. (not pictured)

Baer Match Grade Barrel Links (1,2,3,4,5)

A must for a properly fitted match barrel. Machined from heat treated steel with dimensions centered on the holes. .266, .271, .276, .281, .286.



Baer Disconnecter

A quality piece of equipment for any 1911.

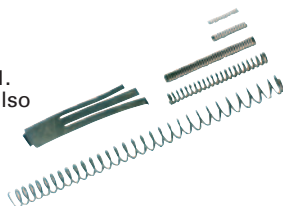
Baer Plunger Tube

Precision machined from bar stock. Fits all 1911s.



Baer 1911 Spring Set

All the springs necessary for your 1911. Specify recoil spring weight. Springs also available separately.



Baer Deluxe Match Commander Hammer and Sear (sold separately, not as a set)

The best you'll find. Precision made with exactly the right geometry for the very best action job. Both hammer and sear are also extremely hard, as you want them, and the surfaces all have the smoothest and brightest finish possible.





Baer Beavertail Grip Safety with Pad, Blue or Stainless Steel

The perfect 1911 beavertail, made to fit your hand exactly right. It features a .250 radius cut from the pin hole. The raised pad ensures positive disengagement even if you ride your thumb on the thumb safety. The hammer fits perfectly into the notch provided. Hammer bite is all but eliminated because the wide beavertail spreads the recoil over a wide portion of your hand. Available blued or in stainless steel.



Baer Flat, Serrated Mainspring Housing

A precision made flat, serrated housing that's slightly larger than most of the standard housings on the market. It's so well made, very little if any fitting is required to give you a "No Gap" look on your 1911. Blued or stainless.



Baer Flat, Hand Checkered Mainspring Housing

The same mainspring housing described above but with the added feature of 20 lpi checkering done completely by hand, not by machine. Blued or stainless.



Baer Speed Trigger

Slightly oversized on the trigger pad for a tighter fit on your 1911. Adjustable for overtravel and takeup.

Baer Long Match Trigger

The same as our Speed Trigger but without holes.





Baer Short Match Trigger

A perfect choice for shooters with shorter fingers or who just prefer a shorter trigger pull.

Baer Extended Ambidextrous Safety

A perfect choice for any 1911 because it's contoured to match the natural bend in your thumb. This serrated safety is a must for lefthanders or for weak-hand shooting. It can also be contoured for tactical use. Blue or stainless steel available.



Baer Checkered Slide Stop

The precise checkering on this slide stop makes it a natural for shooters. Available blued or stainless.

Baer Custom Wood Presentation Box

Identical to the special case that comes with the Baer S.R.P.®. Handsome wood box is professionally finished and Les Baer Custom is laser engraved on the lid. Now comes with glass see-through lid. The inside is padded for excellent protection, then richly lined with luxurious velvet. Double locking latches. Fits most semi-autos and revolvers.



Note: See description.



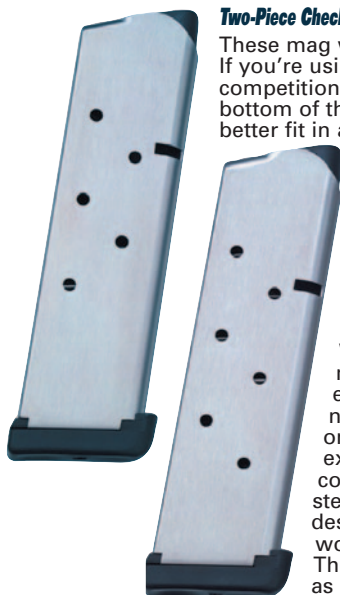
Baer Extended Combat Safety

Some righthanded shooters will really never need an ambidextrous safety. For those shooters, this style safety is ideal. It's precision machined and available in either blued or stainless.

Baer 1911 Recoil Plug, Standard Style

Baer 1911 Recoil Rod, Standard Style





Two-Piece Checkered Mag Well

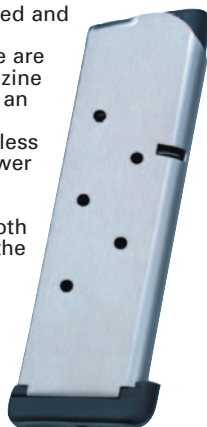
These mag wells are a great way to add extra versatility to your 1911. If you're using your pistol both for duty/defense and for occasional competition, the two-piece design allows you to remove the bottom of the oversized mag well after a match so it's a better fit in a standard holster. When installed on one of our own Les Baer pistols, we'll also bevel both the frame and the bottom of the mag well to create a huge magazine opening. They're available in flat style only, checkered at 25 lpi, and either blued or stainless.



Baer Premium 1911 Magazines

We researched. We evaluated. We modified and made changes. After many months of experimentation, we are confident that we are now able to offer the very best 1911 magazine on the market. This is not just a re-hash of an existing magazine design. We developed completely new tooling, the very best stainless steel, and we adapted the best lip and follower designs we could find into most reliable working 1911 magazines you've ever used. The inside is as bright as a mirror and smooth as glass which allows the ammunition and the follower to glide effortlessly in the magazine tube. The base of the magazine is

removable for easy cleaning. Our Premium 1911 Magazine is available in stainless steel only and just for .45 ACP. When ordering, please specify either 7-round or 8-round (both will fit Government or Commanche/Commander models) or 7-round Stinger model.



DUPONT S COATING

This superior state of the art finish is one of the best we've ever seen. It provides advanced corrosion protection, abrasion resistance, hardness, and unmatched durability. The somewhat slick feel reflects its self-lubricating characteristics.

FINISHING AND REFINISHING

(Prices are for pistols only which are received in like-new condition and clean.)

- Reblue Complete Gun\$190.00
- Reblue Slide Only 110.00
- Reblue Frame Only (with parts) 150.00
- Brushed Hard Chrome, Complete Gun 320.00
- Brushed Hard Chrome, Slide Only 150.00
- Brushed Hard Chrome, Frame Only (with parts) 250.00
- Bead Blasted Hard Chrome, Complete Gun 320.00
- Bead Blasted Hard Chrome, Slide Only 150.00
- Bead Blasted Hard Chrome, Frame Only (with parts) .250.00
- DuPont S Coating, Complete Gun 320.00
- DuPont S Coating, Upper Slide Assembly 170.00
- DuPont S Coating, Lower 1911 Frame Assembly200.00

Baer Custom Clothing To Help You Look Like A Pro.

Baer Custom T-Shirts and Sweatshirts

• Standard Short and Long Sleeve T-Shirt

Available in black or grey. Specify size when ordering.

• Black Hoodie Sweatshirts

Black only. Specify sizes when ordering.



Baer Deluxe Hats

Grey with black bill. Features custom embroidery and six-panel construction. One size fits all.

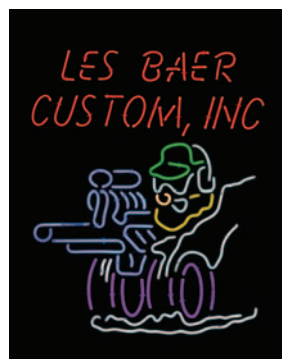


Baer Logo Patch

Multi-color 3-1/2" x 3-1/2" embroidered patch of the Les Baer Custom logo. Ready to apply to your shooting jacket or vest.

Les Baer Custom Neon Sign, 27" X 35"

Les Baer's distinctive shooting/racing logo is now available in neon. Perfect for a gun shop, clubhouse, family room, gun room or "man cave".



A Super Accurate Replica Of Les Baer's Authentic 1970 FORD MUSTANG BOSS 429

Only 500 Of These 1/25th Scale Classic Muscle Cars Are Available.



The original 429 Boss Mustangs were and still are a legend among American muscle cars. Only 500 of these heavy hitters were built in 1970 and they all featured the blue crescent or Hemi-design heads that made them so distinctive. These scale model collectors' cars were built by 1st Gear in Peosta, Iowa, using one of Les Baer's own Boss 429s to make all the prints and engineering drawings. No surprise, then, that these replicas look just like Les Baer's 429, right down to the Grabber Green exterior color with black interior, of which only 43 were built in 1970. Les' was built at Dearborn, Michigan where it was assigned Kar Kraft number KK 2337.

It's equipped with:

- Black Clarion Bucket Seats
- 3:91 Traction Lok Axle
- Four Speed Close Ratio Top Loader Drag-Pak
- Collapsible Spare
- Rim Blow Deluxe Steering Wheel
- Console
- Power Disc Front Brakes
- Décor Group
- Tachometer
- Competition Suspension
- Front Air Spoiler
- Functional Hood Scoop
- Trunk Mounted Battery

The highly detailed replicas feature:

- Opening Hood, Trunk And Doors
- Classic Boss 429 Engine
- Poseably Front Wheels
- Detailed Interior
- Detailed Undercarriage



If you admire fine American muscle cars, this Boss 429 is a must-have for your collection. If you buy one of Les Baer Custom's new Boss 1911 pistols, you really need to complete the package with one of these incredibly detailed replicas.

**LES BAER
CUSTOM, INC.**
**Performance.
It's everything.**

1804 Iowa Drive • LeClaire, Iowa 52753
Ph: (563)289-2126 • Fx: (563)289-2132

Email: info@lesbaer.com • <http://www.lesbaer.com> • Office Hours: 8AM-5PM Central Time

